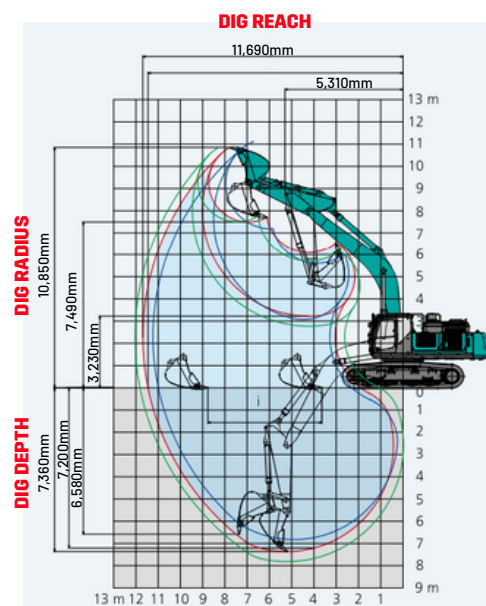
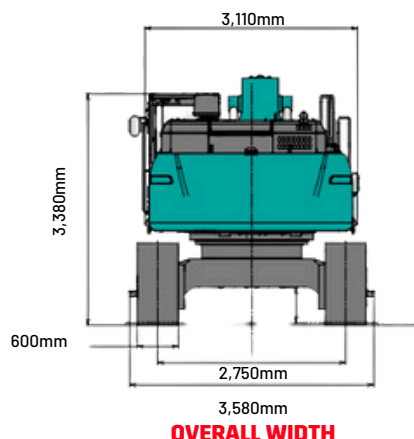
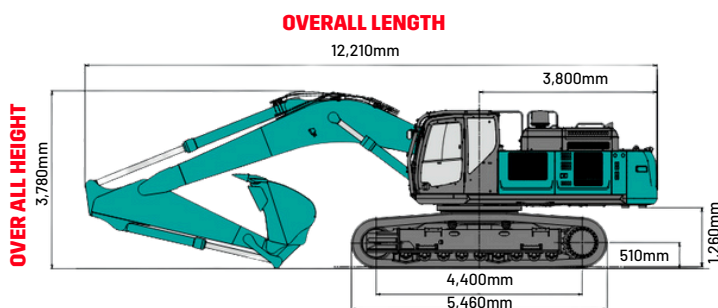


## Kobelco SK500XDLC-10

There is no equal in its class when it comes to the drawbar pull. The heavy-duty Kobelco excavator delivers versatile efficiency and power coupled with speed and uncompromising operator comfort.

### KEY FEATURES

- Heavy-duty arm reinforcement
- Improved filtration system
- Specially designed rock guards
- 2.64m<sup>3</sup> heaped bucket capacity
- Standard reverse camera
- Auto-Idle Stop (AIS)



**Low Loader**

x - Approximate fuel consumption