

## BELL 2806E WATER TRUCK

The Bell 2806E Water Truck is a high-performance, 16,000-litre articulated water tanker designed for superior dust suppression and site maintenance. Built for reliability, efficiency, and maximum coverage, it delivers power and precision across tough terrains.

### KEY FEATURES

- 16,000L water tank capacity
- Mercedes-Benz 275hp engine
- High-flow 1,800 L/min pump
- Heavy-duty wet disc brakes
- ROPS/FOPS certified cabin
- OEM-integrated build and design
- Allison 6-speed automatic transmission



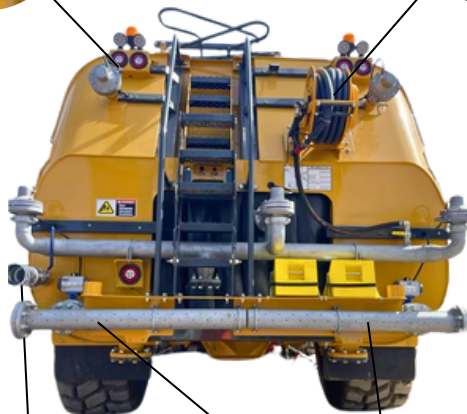
Overhead filling capability



15m spring reel hose



Cab controlled water cannon



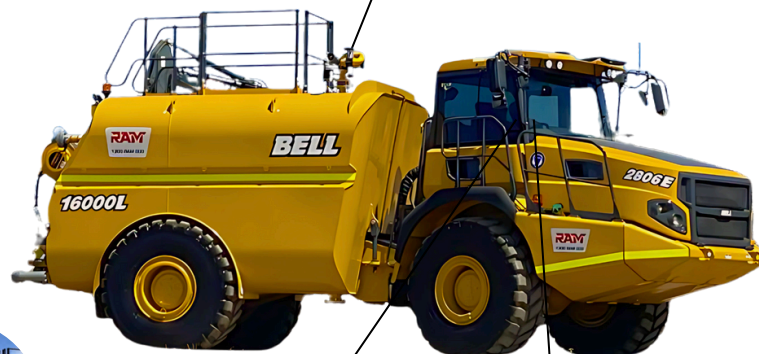
Water main filling



Left and right dribble bar



Side batter spray heads



Cab view



Push button configuration

## BELL 2806E WATER TRUCK

The Bell 2806E Water Truck is a high-performance, 16,000-litre articulated water tanker designed for superior dust suppression and site maintenance. Built for reliability, efficiency, and maximum coverage, it delivers power and precision across tough terrains.

### KEY FEATURES

- 16,000L water tank capacity
- Mercedes-Benz 275hp engine
- High-flow 1,800 L/min pump
- Heavy-duty wet disc brakes
- ROPS/FOPS certified cabin
- OEM-integrated build and design
- Allison 6-speed automatic transmission

