

## Kobelco SK330LC-10

Set up for deep excavations, wide batters, and drainage works, this configuration is designed to work efficiently where standard machines reach their limits. It's a solid option for civil and infrastructure projects that need precision without compromise.

### KEY FEATURES

- Mine spec
- Large LCD display
- 3 work modes - eco, standard, heavy
- 0.8m<sup>3</sup> bucket capacity
- ROPS/FOPS cabin with wide entry

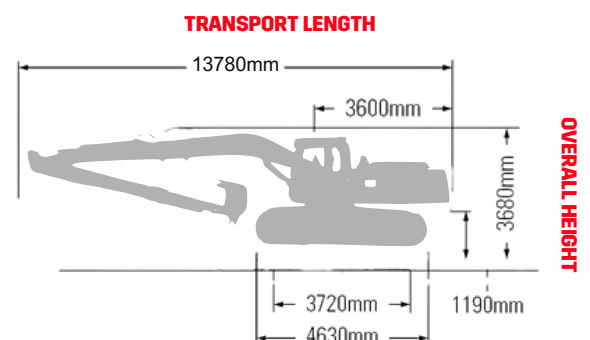
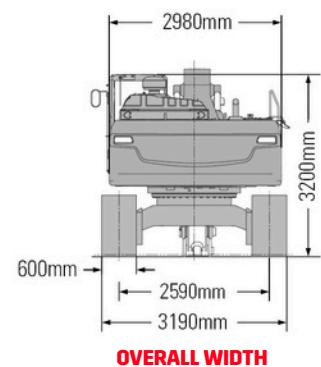
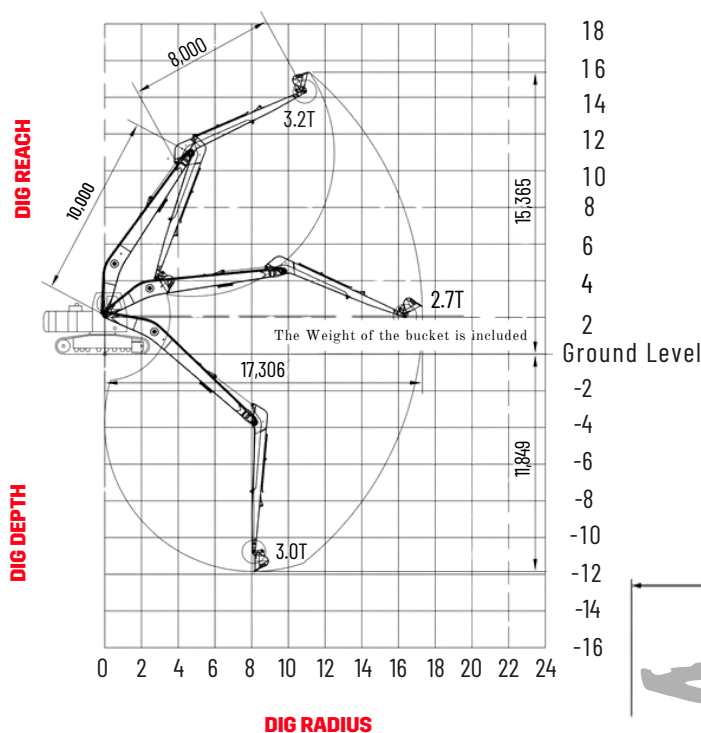


LT<sup>x</sup>  
HR

39,950  
KG

2,700 kg  
▲SWL

Low Loader



x - Approximate fuel consumption